

# Counterpart Insight™ IT Leaders

Counterpart Insight™ is an intuitive cloud based Project Reporting and Portfolio Management solution, allowing you to create projects in minutes, and manage them throughout the project lifecycle.

## Work management solution for IT Leaders

Counterpart Insight™ helps your IT team keep the organisation running successfully. Save time and reduce cost with real-time insight on all your IT initiatives.

### How can Counterpart Insight™ help?

Consolidate reporting and analytics with customisable dashboards. View the metrics you need to refine your processes.

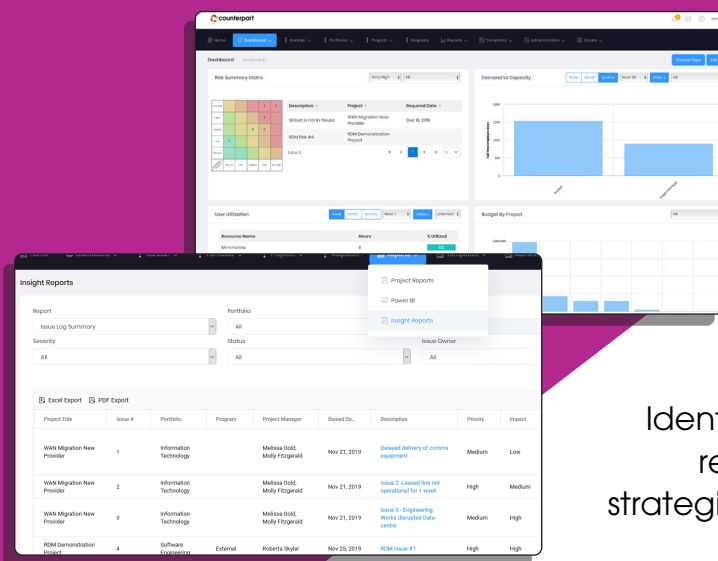
### Easy deployment

Our tool has been designed to be implemented in days rather than weeks or months. Counterpart Insight™ is an intuitive solution that doesn't create any training or support overheads for your already overworked IT teams. We provide training, support and product upgrades.



## Increase productivity

Structure work to suit your team's needs. Real-time actionable intelligence is delivered through customisable reports and dashboards. Identify and address risks with accurate and relevant information, and make the right strategic decisions to keep your work on track.



## Governance & Security

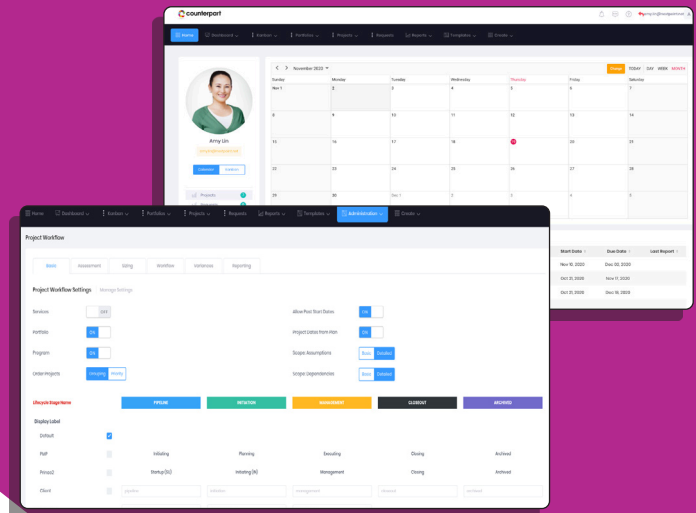
Counterpart Insight™ gives you control of your project governance and security. Create and re-use a library of proven project templates with flexible project routing through configurable approval rules. Establish alternate workflows, to suit your project size and complexity.


Our secure platform is ISO & SOC Compliant, and all data is encrypted in transit and at rest. Counterpart Insight™ allows you to define access using role-based security. We can also integrate with Active Directory for single sign-on\*.



## What makes Counterpart Insight™ different?

Counterpart Insight™ offers simplicity, low implementation cost, and ease of use. We've designed Insight™ to help organisations that want a streamlined reporting solution. Insight™ offers all the project essentials: structured start-up, intuitive planning tools, rich collaboration, powerful reporting, dashboards, and customisable project workflow controls.



 Learn more about how Counterpart Insight™ can help your organisation, contact us on **0330 113 3088**

\*Active Directory integration & single sign-on available upon request.

[www.counterpart.com](http://www.counterpart.com)