

# Counterpart Insight™ Project Management Office

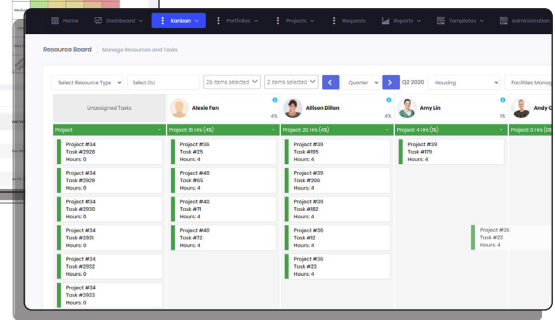
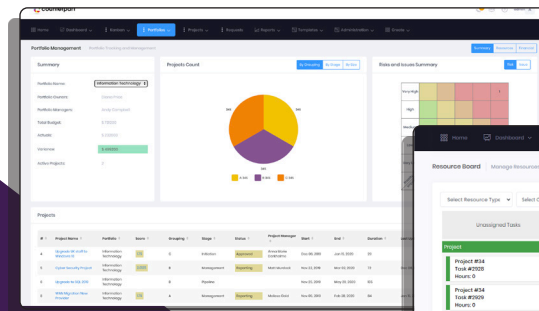
Connect strategy with execution to ensure that business initiatives deliver desired value.

Dynamically review status reports for all your organisations initiatives, projects, risks and issues in one place.

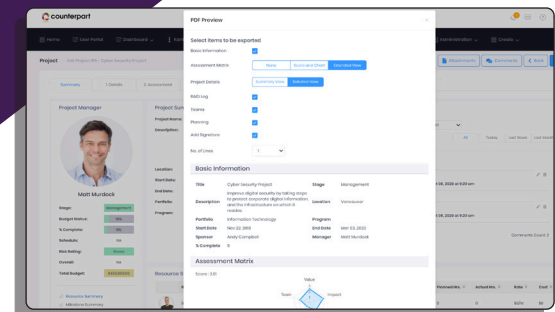
Seamlessly drive consistent standards and accurate reporting on execution and delivery across all enterprise initiatives. The resulting governance and control of multiple programmes is streamlined and simplified.

## Key benefits

- Powerful integrated decision support and prioritisation tools.
- Simplified portfolio overview for real-time insight on financials resources and schedule.
- Enhanced real-time insight for all stakeholders, with key decision support KPIs and metrics.
- Real-time budget and cost management.
- Agile planning, review and resource management across current and future initiatives.
- Configurable dashboards facilitate rapid sharing of information for specific initiatives stakeholder.
- Kanban boards to plan, review and manage current and future resources across initiatives.
- Quickly capture and analyse new project ideas in minutes with our integrated decision matrix and project sizing tools.
- Simple, easy to use and understand.
- Rapid and streamlined implementation.
- Seamless integration with Microsoft 365.



Counterpart Insight™ delivers actionable intelligence through key metrics and KPIs across multiple portfolios, programmes and projects in real-time.



Our cloud-based work management solution provides project portfolio management teams with insight that seamlessly connects execution and value with business strategy.

# Key features

## Strategic Initiative Management

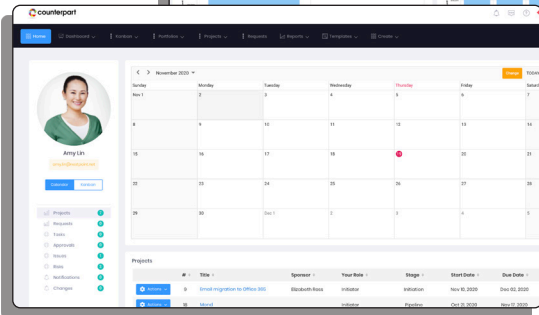
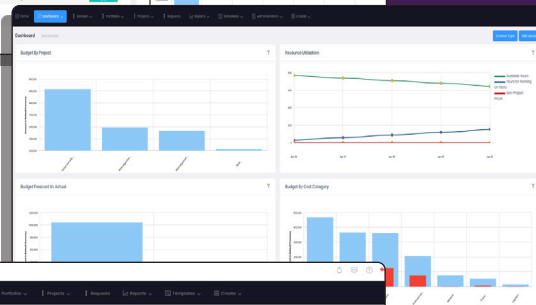
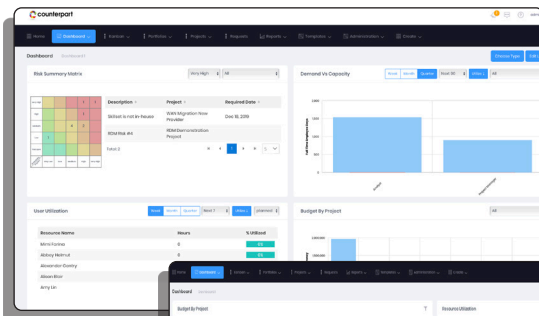
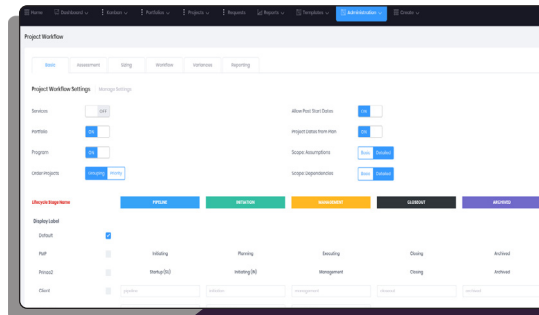
- Capture ideas Agile Visual Planning
- User configurable dashboards
- Capture ideas and initiatives
- Risk & Issue Management
- Align initiatives to strategy
- Create Bespoke KPIs and Metrics
- Strategic Planning
- Powerful decision matrix
- Project size based workflows

## Program & Portfolio Management

- Capture ideas and initiatives
- Configurable project methodologies
- Visual Kanban Planning
- Risk and Issue Management
- Program & Portfolio Viewer
- Pipeline Planner
- Portfolio Budget management
- Portfolio pipeline management
- Thresholds Management

## Governance & Security

- Library of Project Templates
- User defined Approvals workflow
- Role based security RBAC
- ISO & SOC Compliant Platform
- Project size based workflows
- Powerful decision matrix
- Single Sign-On



## Budget & Financial Management

- Budget forecasting
- Financial progress tracking
- Financial Reporting
- Multi Currency Support & Conversion
- Financial KPIs and Metrics alerts
- Configurable Finance dashboards

## Reporting Features

- Create bespoke KPIs and Metrics
- Executive Dashboards
- Dynamic Risk & Issue Reporting
- User configurable Widgets
- User configurable 'One page' reports
- User configurable dashboards
- AI Project progress Reporting
- AI Portfolio & Program Status Reporting
- AI BI Reporting
- Bespoke Reports



Learn more about how Counterpart Insight™ can help your organisation, contact us on **0330 113 3088**

[www.counterpart.com](http://www.counterpart.com)